


CASE REPORT

Open Access



Lameness in fattening pigs – *Mycoplasma hyosynoviae*, osteochondropathy and reduced dietary phosphorus level as three influencing factors: a case report

B. Wegner¹, J. Tenhündfeld², J. Vogels³, M. Beumer³, J. Kamphues⁴, F. Hansmann⁵, H. Rieger⁴,
E. grosse Beilage³ and I. Hennig-Pauka^{3*} 

Abstract

Background: Multiple diagnostic procedures, their results and interpretation in a case with severe lameness in fattening pigs are described. It is shown that selected diagnostic steps lead to identification of various risk factors for disease development in the affected herd. One focus of this case report is the prioritization of diagnostic steps to verify the impact of the different conditions, which finally led to the clinical disorder. Assessing a sufficient dietary phosphorus (P) supply and its impact on disease development proved most difficult. The diagnostic approach based on estimated calculation of phosphorus intake is presented in detail.

Case presentation: On a farrow-to-finishing farm, lameness occurred in pigs with 30–70 kg body weight. Necropsy of three diseased pigs revealed claw lesions and alterations at the knee and elbow joints. Histologic findings were characteristic of osteochondrosis. All pigs were positively tested for *Mycoplasma hyosynoviae* in affected joints. P values in blood did not indicate a P deficiency, while bone ashing in one of three animals resulted in a level indicating an insufficient mineral supply. Analysis of diet composition revealed a low phosphorus content in two diets, which might have led to a marginal P supply in individuals with high average daily gains with respect to development of bone mass and connective tissue prior to presentation of affected animals. Finally, the impact of dietary factors for disease development could not be evidenced in all submitted animals in this case.

Conclusions: *Mycoplasma (M.) hyosynoviae* was identified to be an important etiologic factor for disease. Other, non-infectious factors, such as osteochondrosis and claw lesions might have favored development of lameness. In addition, a relevant marginal P supply for pigs was found in a limited time period in a phase of intense growing, but the potential interaction with infection by *M. hyosynoviae* is unknown.

The presented case of severe lameness in fattening pigs revealed that three different influences presumably act in pathogenesis. Focusing only on one factor and ignoring others might be misleading regarding subsequent decision-making for prevention and therapy. Finally, clinical symptoms disappeared after some changes in diet composition and anti-inflammatory treatment of individual animals.

Keywords: Locomotor disorder, Mineral supply, *Mycoplasma hyosynoviae*, Nutrition, Swine

* Correspondence: isabel.hennig-pauka@tiho-hannover.de

³Field Station for Epidemiology, University of Veterinary Medicine Hannover, Foundation, Hannover, Germany

Full list of author information is available at the end of the article



© The Author(s). 2020 **Open Access** This article is licensed under a Creative Commons Attribution 4.0 International License, which permits use, sharing, adaptation, distribution and reproduction in any medium or format, as long as you give appropriate credit to the original author(s) and the source, provide a link to the Creative Commons licence, and indicate if changes were made. The images or other third party material in this article are included in the article's Creative Commons licence, unless indicated otherwise in a credit line to the material. If material is not included in the article's Creative Commons licence and your intended use is not permitted by statutory regulation or exceeds the permitted use, you will need to obtain permission directly from the copyright holder. To view a copy of this licence, visit <http://creativecommons.org/licenses/by/4.0/>. The Creative Commons Public Domain Dedication waiver (<http://creativecommons.org/publicdomain/zero/1.0/>) applies to the data made available in this article, unless otherwise stated in a credit line to the data.

Background

Mycoplasma (M.) hyosynoviae is a commensal of the upper respiratory tract, especially in the tonsils [1], that may lead to clinical disease mainly in older pigs (> 10 weeks) [2]. The detection rate has increased in the last years in pigs with arthritis in Denmark with approximately 20% already in 2001 [3], and in the USA with approximately 8% in 2003, 23% in 2010 [2] and 26% in 2015 [4]. Affected pigs show avoidance of standing up or an impaired ability to stand within approximately 24 h post infection [5, 6]. The clinical symptoms include sudden lameness affecting one or more limbs, with the animals balancing their weight from one leg to the other [6] up to a dog sitting position [7]. Young adults often experience two-three lameness episodes over a 4-6-week period [8]. *M. hyosynoviae* is probably present in many herds worldwide, high morbidity rates occurring in fattening pigs between 50 and 60 kg; gilts and breeding boars could be affected as well [1]. It is also known that joint infections with *M. hyosynoviae* can be clinically asymptomatic, since the pathogen has also been diagnosed in synovial fluid of non-lame pigs [3]. For this reason, additional trigger factors for disease development should be taken into account during the diagnostic procedure.

A common degenerative disorder in skeletally immature pigs is osteochondrosis, which is initiated by failure of the blood supply in the growth plate cartilage and ischemic chondronecrosis resulting also in bone lesions [9–11]. The etiology of osteochondrosis is mostly multifactorial, with several factors triggering disease development as heritable and anatomical traits and physical trauma, while rapid growth and dietary factors were also discussed [12]. Specific anatomical traits such as unfavorable joint shapes, carcass length and weight of hams were correlated with osteochondrotic lesions, especially if combined with biomechanical stressors [13, 14].

Other important diseases in growing pigs are metabolic systemic osteopathies due to mineral imbalances. In recent years, the German Fertilizer Ordinance (FO) has been made stricter, with the aim of reducing the environmental nitrogen and phosphorus load. According to national and international legislation, several restrictions in manuring came into force to reduce emissions from intensive animal production [15–17]. A high potential measure for emission reduction is an N- and P-reduced feeding concept strictly adapted to the animal's requirements [18]. Reference standard concentrations for nutrients in animal feedstuff are commonly used for calculating the necessary amount of nutrients in a diet to fulfil animal needs. Usually it is not taken into account that dietary nutrient levels vary depending on different growth and weather conditions. For this reason, the routinely performed conception of a diet, which is

based on reference standard concentrations, bears the risk of a marginal nutrient supply. A specific problem is the correct quantification of digestible P, which cannot be defined by chemical analysis of the diet, but by feeding experiments only. The digestible P levels vary between but also within different crops, especially due to phytate as well as phytase levels [19].

Phosphorus, in particular, is frequently reduced in the diet of pigs to lower P-content in manure and to save costs for this expensive component. General weight-group dependent estimates for digestible P in diets of 3.3 g/kg (20–28 kg body weight (bw)) and 3.1 g/kg (20–40 kg bw) are oriented according to growth demands [20]. Digestible P is primarily used for growth and is in parallel accumulated in bones with increasing concentrations until a plateau is reached and excess P is excreted also in urine [21]. In general, requirements for digestible P are higher for bone mineralization than for maximizing gains and are defined to be approximately 4.3–5.5 g/kg [21–23] for pigs with 20–40 kg bw, which were also dependent on the Ca: digestible P ratio, which should be approximately 2.5:1 [22].

Reduced dietary P levels in the weaner-grower period can lead to impaired bone mineralization [24]. It has to be underlined that bone mineralization in the early growth phase of mammals is fundamental for maximum bone mineralization in later life, and is therefore crucial for prevention of locomotor disorders [25]. P utilization is not only dependent on the form of the P sources used (inorganic vs. organic), but also on the activity of phytases present in the diet (endogenous or added) and the Ca:P ratio [26]. Both elements are tightly regulated in parallel to maintaining homeostasis with bone as a target but also as endocrine tissue for the regulating hormones and modulating factors [27].

A minimum Ca:P ratio of 1:1 is required, while the recommendation for pigs with a 50–80 kg bw is 1.25:1 [20]. Dietary Ca concentrations for maximal mineralization were highly variable between different studies (6.5–10 g/kg) [22]. A Ca deficiency can lead to a weakening of the growth plate located between meta- and epiphysis at the ends of long bones, resulting in development of osteoid as an unmineralized organic bone matrix [28, 29]. Other nutritional factors, such as vitamin D supplementation, influence the Ca-P homeostasis [30]. Adequate supply of minerals for bone development might also be dependent on the general herd health because metabolic changes during infection and inflammation, immune deficiency or disease-related stress can alter feed uptake and protein accretion [31]. In addition, age, gender, economic and several biological factors influence bone development [32].

In the present case report, it became apparent that the veterinary practitioner and the involved diagnostic

institute faced a disease picture, which represented the final outcome of the exposure to etiologic causes dating back to earlier periods of life-time (Fig. 1). It was shown that three different etiologic factors were interlocked during pathogenesis of lameness in fattening pigs. The report describes a large panel of diagnostic measures. Finally, the most straightforward diagnostic approach covering the different facets of “lameness” is discussed as a lesson for clinical practice learnt from this case.

Case history

On a farrow-to-finishing farm with 450 productive sows and 4900 fattening pigs in North Rhine-Westphalia, Germany, lameness occurred in fattening pigs of both sexes with a body weight of 40–70 kg. Male pigs were not castrated on this farm. The genetic background of sows was DanBred, while the piglets were crossbreds of DanBred x PIC 408. The farm produced in a three-week batch system with seven batches in sizes of approximately 64 productive sows and 2.35 litters per sow per year. After a lactation of 4 weeks, piglets were raised in groups of 42 animals per pen up to a weight of 28 kg in the nursery unit on plastic slatted flooring until week 11 of age. The totally slatted flooring in the fattening stable complied with the German Animal Welfare Livestock Farming Regulation with 18 mm gaps and 80 mm wide concrete elements. The slatted plastic flooring in the nursery was assessed as soft ground, while the slatted concrete flooring in the fattening stable was assessed as hard. In total, the nursery had approximately 3000 places and the fattening stable approximately 4900 places with 35 pigs per pen. All-in-all-out (AIAO) was performed in all production units. Average daily weight gain was 820 g in fatteners within an average fattening period of 110

days. The average body weight of pigs at slaughter was approximately 116–118 kg.

The final diet in the trough was a combination of fermented ingredients (cereals and rapeseed meal with 0.14% Ca and 0.4% P) and a supplementary feed (Table 1: AZ-3, VM28, AM40, MM65) in varying proportions for different age groups. The mixture of ingredients that were used in the controlled fermentation (13 h at 37–39 °C) and the supplementary feed were delivered by a conventional feed company. Fermentation resulted in a final pH of 3.8 using starting cultures of *Lactobacillus plantarum* and *Pediococcus acidilactici* (Proferm HCL-FL®, Agravis Raiffaisen AG, Münster, Germany). The fermented part had been automatically added to the final liquid diet immediately before feeding starting at day 15 after weaning. The share of fermented ingredients within the final diet increased from 5% up to 65% in the final fattening period. The final diet contained thermostable and pH-tolerant phytase-6 (4a24 DuPont Aextra®-Phythermostabil, DuPont Nutrition & Biosciences, Copenhagen, Denmark). The drinking water was farm own ground water. Samples of the different final liquid diets were analysed by the LUFA/Chamber of Agriculture North Rhine-Westphalia, Germany for nutrient contents (Table 1). Diets were analyzed by standard procedures following the routine methods of the Association of German Agricultural Investigation and Research Institutions (Verband Deutscher Landwirtschaftlicher Untersuchungs- und Forschungsanstalten). Crude protein was determined on the basis of nitrogen quantification following the method of Kjeldahl. Nitrogen was measured in a high temperature elemental analyzer (Vario Max®, Elementar, Hanau, Germany). The calcium content was determined by atomic absorption spectrometry, phosphorus colorimetrically [33, 34]. For the

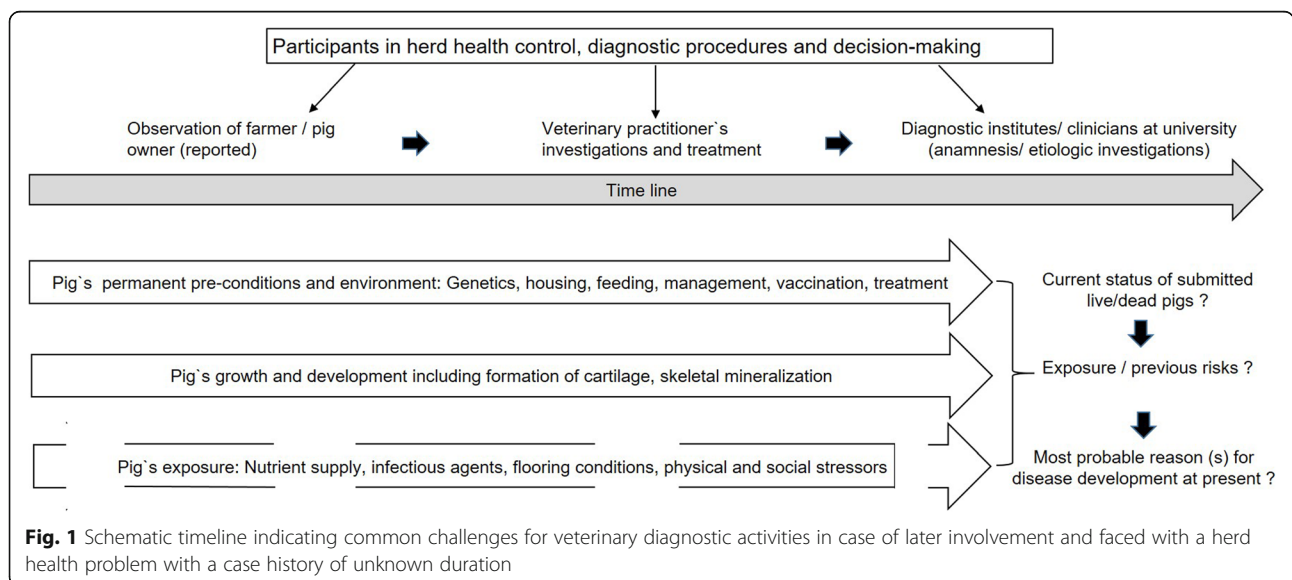


Fig. 1 Schematic timeline indicating common challenges for veterinary diagnostic activities in case of later involvement and faced with a herd health problem with a case history of unknown duration

Table 1 Feeding techniques and diets' composition (in all groups: liquid diet offered ad libitum, probe system)

	Diet (AZ-3) for growing pigs (88% DM)	Diet 1 (VM28) for fattening pigs (88% DM)	Diet 2 (AM40) for fattening pigs (88% DM)	Diet 3 (MM65) for fattening pigs (88% DM)
Week	9–11	12–14	15–17	18–20
Body weight (kg)	15–28	28–40	41–65	66–80
Pigs, n per group	42	35		
Pigs, n per valve	84	70		
Length of trough (m)	2.5	3.8		
Dry matter (DM) of the final liquid diet (%) ^a	25.60	21.80	24.40	23.80
Analyzed nutrients (88% DM):				
Crude protein (%)	18.10	18.20	16.80	17.40
Crude fiber (%)	3.00	2.90	3.50	3.80
Ca (%)	0.92	0.81	0.87	0.79
P (%)	0.46	0.46	0.46	0.49
Ca:P ratio	2:1	1.8:1	1.9:1	1.6:1
Labeled nutrient content in supplementary feed (88% DM):				
Energy (MJ ME)	13.20	13.20	13.20	13.10
Crude protein (%)	18.50	16.14	15.25	14.00
Lysine (%)	1.50	1.15	1.08	0.98
Fat (%)	5.00	3.25	3.00	3.00
Fiber (%)	3.50	4.10	4.25	4.50
Ca (%)	1.00	0.70	0.67	0.65
P (%)	0.45	0.40	0.40	0.37
6-Phytase (FTU/kg)	1125	750	750	750

Analyzed values of diet composition and feeding techniques in the different age groups are shown. P-content is highlighted in bold as it is assessed to be critically low compared with the officially recommended values [20] regarding total dietary phosphorus in Table 2

^aShare of fermented ingredients varied between 28 and 50%

analysis of crude fiber the fat- and ash-free samples were cooked with acid (1.25% sulphuric acid) and alkaline (1.25% sodium hydroxide) solutions in a crude fibre determination device (Fibertec™ 2010 Hot Extractor, Fa. Foss GmbH, Hamburg) followed by drying, ashing and weighing [33].

As shown in the feed declaration in Table 1, compared to official recommendations shown in Table 2, the total

Table 2 Official recommendations for feed intake, energy, protein and Ca and P contents according to the weight range of pigs [20]

Body weight range (kg)	11–25	25–50	50–75	75–100
Daily feed intake (g, 88% DM)	953	1582	2229	2636
Energy (MJ ME/kg, 88% DM)	14.0	13.8	13.8	13.8
Protein (g/kg, 88% DM)	189	157	138	121
Calcium (g/kg, 88% DM)	7.0	6.6	5.9	5.2
Phosphorus (g/kg, 88% DM)				
-total	6.0	5.6	5.2	4.7
-digestible	3.3	3.1	2.7	2.4

phosphorus content was reduced in the diet and did not meet the officially recommended values.

Recurring diseases on farm were arthritis and meningitis caused by *Streptococcus* (*S.*) *suis*, which was treated by amoxicillin application via the liquid diet in cases of disease outbreaks. Intermittent cases of fever and respiratory distress occurred in fatteners due to the influenza virus. At the time of this case report, neither *S.-suis*- nor influenza-related disease cases were observed. Routinely, all sows were vaccinated against four influenza virus subtypes at day 80 of gestation (Respiporc FLU3 and Respiporc FLUPAN H1N1, CEVA Tiergesundheit GmbH, Düsseldorf, Germany) and against parvovirus and swine erysipelas at day 14 after farrowing (Parvorovac, CEVA Tiergesundheit, Düsseldorf, Germany). Routinely, all piglets were vaccinated with commercial products against the Porcine Reproductive and Respiratory Syndrome virus (Unistrain® PRRS, Hipra, Amer, Spain), Porcine Circovirus 2 (Ingelvac Circoflex®, Boehringer Ingelheim, Vetmedica GmbH, Ingelheim, Germany) and *M. hyopneumoniae* (Hyogen®, CEVA Tiergesundheit GmbH, Düsseldorf, Germany) at

an age of 24 days, i.e., prior to weaning. At an age of 50 and 70 days, pigs were vaccinated against *Actinobacillus pleuropneumoniae* (Coglapix®, CEVA Tiergesundheits GmbH, Düsseldorf, Germany).

Clinical examination of pigs in the pens was performed daily by the farmer by inspecting groups of pigs in pens and counting those pigs with suspected lameness according to behavior during resting, standing up, lying down and walking. Diseased pigs were color-marked on the back for later inspection, treatment and follow-up assessment on the following days. After assessing the number of affected pigs, selected individual pigs were examined by visual examination of the joints by the veterinarian at its weekly visits. Main clinical symptoms were high-grade lameness with a stiff walk in approximately 10–35% of the fattening pigs at an age of 80–140 days (30–70 kg bw). Limbs were free of swellings and no obvious signs of arthritis were observed. All diseased animals and the individual treatments were recorded by the farmer. Treatment data were digitalized within the official antibiotic database of the obligatory German surveillance system. For treating those pigs with lameness, amoxicillin trihydrate (Hostamox LA 150 mg/mL, MSD Tiergesundheits Deutschland GmbH, Unterschleißheim, Germany, 15 mg/kg bw) was injected two-four times at 24 h intervals. In addition, 0.1 mg dexamethasone per kg bw (Rapidexon Albrecht, Dechra Veterinary Products Deutschland GmbH, Aulendorf, Germany) was injected twice with an interval of 1 day. Approximately 90% of the treated pigs recovered within 1 week after treatment. The oral treatment with 10 mg tiamulin fumarate (Denagard 45%, Elanco Deutschland GmbH, Bad Homburg, Germany) per kg bw via the liquid diet was not successful.

Case presentation

In February 2019, three untreated pigs (32–45 kg bw) from the affected age-groups showing severe tripping in the hind legs were selected by the veterinarian for further diagnostics. The attending veterinarian performed X-rays of limbs under deep anesthesia after intramuscularly administering 2 mg azaperone/kg bw (Stresnil®, Elanco Deutschland GmbH, Bad Homburg, Germany) and 20 mg ketamine/kg bw (Ursotamin®, Serumwerk Bernburg, Bernburg, Germany). Only those joints with high probability of osteochondrosis based on observed movement behavior of the animals (tripping in hind limbs) were x-rayed. Joints selected for x-raying are described in Table 3. Pigs 1 and 3 were reluctant to move the forelimbs before standing up, so that the shoulder and elbow joints were x-rayed as well. Digital x-ray examination of the joints was performed in a radiological unit (Vetsystem 30, IBM Inc., Armonk, NY, USA) with automatic exposure with 30 kW. Detailed pre-setting values are recorded in Table 3. Anesthetized animals were placed in lateral or sternal recumbency depending on the x-ray path. Slight irregularities were found in the epiphyseal transition zone at the knees of pig 2 and pig 3 (Fig. 2) as well as the elbow joints in pig 1. No other joints showed pathologic findings in x-ray pictures. Subsequently, pigs were transported to the Field Station for Epidemiology of the University of Veterinary Medicine Hannover in Bakum, Germany, where a further clinical examination was performed prior to euthanasia. Examination of the limbs following good veterinary practice, starting with inspection from behind, from the front and the side during standing and walking of the animal, was performed prior to euthanasia. The character (during support or hanging of the limb) and

Table 3 Macroscopical findings regarding joints and claws of the three pigs

	Pig 1 (female, 45 kg)	Pig 2 (male, 32 kg)	Pig 3 (female, 39 kg)
Joints	Elbow and tarsal joint: Slightly increased amount of synovia, turbid synovia, redness of synovialis.	Carpal joint: Subcutaneous edema of the joint. Knee joint: Slight increase in synovia, turbid synovia.	Carpal joint: Slightly increased amount of synovia, turbid synovia, redness of synovialis. Tarsal joint: Subcutaneous edema of the joint.
Claws	Both claws of both forelimbs: Medial dew claws: 2 × 1 cm ² lesion at the lateral wall. All dew claws: skin of the coronary band not intact. Left claw of hindlimb: Lateral claw and dew claw each: 1 × 1 cm ² lesion at lateral wall. All claws: Superficial erosive heel lesions (horn detachment at the heel sole horn).	Lateral claw of left forelimb: Upper sole layer lost, lower layers appear dark and rough. All claws: Superficial horn detachments in the cranial parts of the heel sole horn.	Lateral claws of both forelimbs: Wall horn fissures in the caudal part with slight wall horn detachment from corium in an area of 0.5 × 1 cm ² .
X-ray pictures	Hips (66 kV, 30 mAs), knees (50 kV, 20 mAs), shoulders/elbows (60 kV, 25 mAs), tarsal joints (50 kV, 10 mAs).	Hips (60 kV, 25 mAs), knees (50 kV, 10 mAs).	Hips (65 kV, 25 mAs), knees (50 kV, 15 mAs) left shoulders/elbows (60 kV, 20 mAs), tarsal joints (50 kV, 10 mAs).



Fig. 2 X-ray findings of left knee of pig 3. An osseous tulip-shaped bulge at the distal epiphyseal cartilage of the femur (arrow) as well as incongruities at the articular surface of the tibia (arrowhead) are visible. The x-ray picture was produced with pre-settings 30 kV, 50 kV, 15 mAS

severity grade of lameness, as well as the affected anatomical side was assessed by inspection, followed by palpation of the joints. Lameness was characterized by stiff walking and a quick change in weight-strain between the hind limbs during standing (tripping). All animals were reluctant to stand up. No obvious joint swellings were observed. Blood samples were taken from the *V. jugularis* of these pigs prior to euthanasia. Blood was centrifuged after a clotting time of approximately 30 min at 2000 g for 10 minutes. Pre-analytical treatment of blood samples is critical for P analysis because hemolysis leads to an artificial increase in P concentrations. For this reason, hemoglobin was measured in the serum samples as a quality control. Macroscopic necropsy findings are summarized in Table 3. Macroscopic cartilage lesions are shown in Fig. 3 and claw lesions in Fig. 4. Cultural microbiological testing of articular swabs showed no pathogens. Real-time PCR was positive for *M. hyosynoviae* (cycle threshold (ct) value 29–32) in all three animals.

Histologic examinations of the stifle joints were performed at the Department of Pathology of the University of Veterinary Medicine Hannover, Germany. Inflammatory as well as degenerative lesions were found (Fig. 5, Table 4).

The femur bones of all three pigs were measured after thorough removal of adjacent tissue. The distal third of the femur of each pig was ashed at the Institute of Animal Nutrition. Serum samples were sent to the Clinic



Fig. 3 Macroscopic lesions in the knee of pig 3. Irregularities at the articular cartilage of the tibia are visible (arrow)

for Swine, Small Ruminants and Forensic Medicine of the University of Veterinary Medicine Hannover to determine the concentration of calcium and phosphorus (Table 5).

In addition, individual serum samples of the pigs were sent to GD (Gezondheidsdienst voor Dieren, Deventer, the Netherlands) to determine bone markers osteocalcine and C-telopeptid (CTx) reflecting bone metabolism. Serum samples were pooled according to the routine diagnostic procedures. Osteocalcine is indicative of bone formation, while CTx marks bone resorption. While osteocalcine-concentration was reduced (20.0 µg/L



Fig. 4 Macroscopic lesions at claws of pig 1. Volar surface of claws of the hind feet with erosive heel lesions and lesions of the coronary band at the dew claws. In this pig, erosive heel lesions were found in all claws

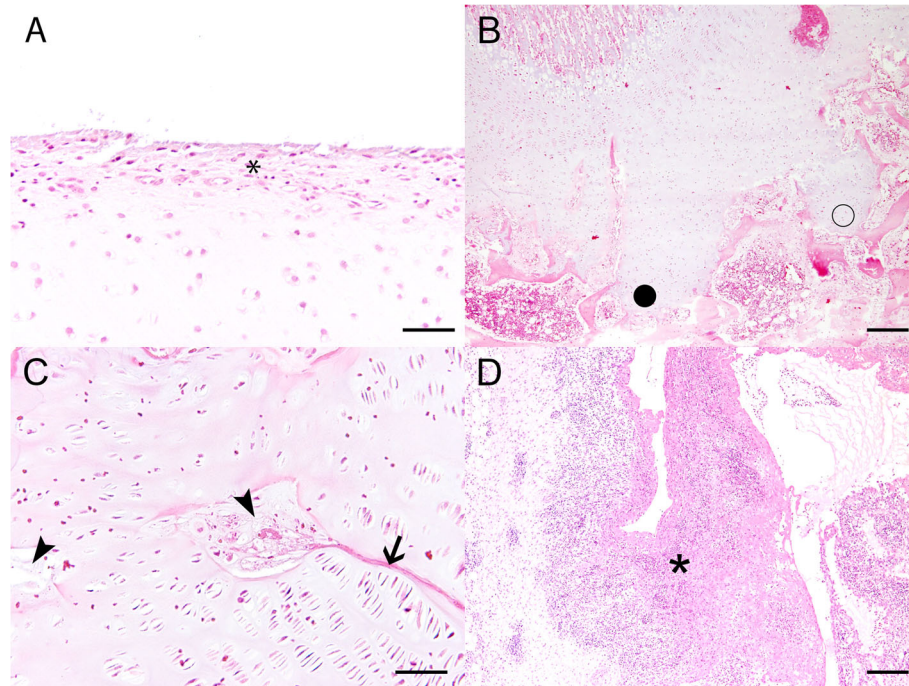


Fig. 5 Histologic findings in stifle joints of pig 2. **a** Histopathology revealed a pannus formation at the articular cartilage of the femur with demasking of collagen fibers (asterisk). **b** Within the physis, multifocal cartilage cones (O) were detected. **c** Additional findings in the physis included multifocal chondrocyte degeneration (arrowhead) as well as eosinophilic streaks (arrow). **d** The synovial membrane revealed severe fibrinopurulent (asterisk) inflammation. Hematoxylin and eosin staining, bars = 50 μm (**a, c**) and 200 μm (**b, d**)

[reference value: > 50 $\mu\text{g/L}$]), CTx was within the reference range (0.17 $\mu\text{g/L}$ [reference value: < 0.2 $\mu\text{g/L}$]). As a consequence, the osteocalcine:CTx ratio (osteocalcine:CTx = 117.6 [reference range: > 150]) was reduced.

Interpretation of findings and measures

Diagnostic findings indicated a multifactorial disease pathogenesis.

Clinical findings were typical for both, arthritis caused by *M. hyosynoviae* and osteochondropathia. All pigs were infected by *M. hyosynoviae*. Histologic findings reflected degenerative cartilage and bone alterations characteristic of osteochondrosis (OC). Blood concentrations of calcium and phosphorus gave no evidence of mineral deficiency in the three tested animals.

In a previous experimental study performed at the Institute for Animal Nutrition, University of Veterinary Medicine Hannover, which was involved in this case report, serum P values varied between 2.5–2.8 mmol/L in pigs (bw ~ 55 kg) at generous P supply (including inorganic P sources and phytase) but dropped to values close to 1.58 mmol/L at renounced inorganic P and phytase (after 3 weeks of different dietary treatment) [36]. Homeostatic mechanisms control P and Ca concentrations in the blood so that serum concentrations are not considered a reliable indicator of insufficient mineral supply [38]. In general, P serum concentration drops only during severe P deficiency.

The youngest pig 2 showed a reduced mineral content in the femoral bone sample (Table 5). This finding in

Table 4 Histologic findings in stifle joints

	Pig 1 (female, 45 kg)	Pig 2 (male, 32 kg)	Pig 3 (female, 39 kg)
Femur, articular epiphyseal cartilage		Multifocal pannus formation with demasking of collagen fibers.	
Femur, physis	Single cartilage cones.	Multifocal cartilage cones, multifocal chondrocyte degeneration and eosinophilic streaks.	Multifocal cartilage cones, multifocal chondrocyte degeneration, mild medullary fibrosis.
Stifle joint, synovial membrane	Mild to moderate, multifocal to coalescent, lympho-plasmahistiocytic synovialitis.	Moderate, fibrinosuppurative, partly lympho-plasma-histiocytic synovialitis.	Mild to moderate, multifocal, lympho-plasma-histiocytic synovialitis.

Table 5 Results of blood analyses and femoral ashing of the three pigs

	Reference values	Pig 1 (female, 45 kg)	Pig 2 (male, 32 kg)	Pig 3 (female, 39 kg)
Blood analyses				
AP [U/l]	0 - 300 ^a	257	175	186
Ca [mmol/L]	2.5–3.1 ^a	2.86	2.53	2.56
P [mmol/L]	2.8–4.3 ^a	2.96	2.69	2.79
hemoglobin [g/L]	–	0.27	0.4	0.35
Bone ashing				
Bone length (mm)	–	171	142	158
Bone diameter (mm)	–	22	19	22
Total fat-free weight of piece of femur used for analysis (g)	–	27.98	20.80	22.99
Total ash content of piece of femur used for analysis (g)	–	13.60	9.11	10.92
DM [g/kg]	–	473	379	422
Ash [g/kg ffr DM] ^d	493 ± 20.4 ^b 495–524 ^c	486	438 ↓	475
Ca [g/kg ffr DM] ^d	154 ± 8.7 ^b 179–196 ^c	180	159	177
P [g/kg ffr DM] ^d	79.3 ± 3.4 ^b 107–118 ^c	83	75.1 ↓	83.5

^aReference values for blood in crossbreed grower pigs [35]

^bReference values for bone ashing results in this age-group had been previously established for the distal femur epiphysis at the institute [36]

^cIn addition, study findings for the third metacarpal bone of finishing pigs fed different phosphorus sources are recorded [37]. Ranges include results from feeding groups with calculated Ca of 0.78% and P of 0.56% in nursery and Ca of 0.65% and P of 0.43% in fattening diets [37]

^dGram per kilogram fat-free dry matter, AP alkaline phosphatase

combination with bone marker values suggested a catabolic status of bone metabolism (bone resorption) and therefore an inadequate mineralization of bones in clinically affected individuals.

Clinical findings of a progressive, shifting lameness, which affects one or more limbs, reluctance to move or to stand up, changing posture of the hind legs were typical of the disease. Moreover, claw lesions were found, which could additionally be a trigger factor for disease due to disturbed body weight balancing, or which could be the result of putting increased weight on the claws due to specific postures.

Case outcome

In April 2019, in the three different diets used at the early stage of fattening, dietary Ca content was adjusted to 0.7% and total P to 0.48%. The proportion of fermented ingredients in the final liquid diet was restricted to 50%. In parallel, feeding technique was checked and feeding valves were tested and controlled for adequate function on a regular basis.

Between February and May 2019, individual pigs affected by lameness were treated with amoxicillin trihydrate and dexamethasone two-four times at 24 h intervals as previously described. Within these months, the incidence rate decreased to less than 5%.

Discussion and conclusions

All findings in fatteners with impaired mobility on this farm led to the assumption that *M. hyosynoviae* as an

infectious factor was involved in disease pathogenesis in combination with additional factors. A slight increase in synovia volume was found in two of the pigs and in two pigs a subcutaneous edema of the joints was observed. A mild to moderate lymphoplasma-histiocytic inflammation as well as a fibrino-suppurative synovialitis were detected by histology. Infectious arthritis caused by *M. hyosynoviae* often results in decreased profitability for the farmers due to higher medication costs and time-consuming measures that have to be taken, such as segregating diseased pigs in recovery pens. This infectious agent also further impairs skeletal health in fatteners, which is an important welfare issue [2]. In this case, antibiotic treatment with amoxicillin in combination with an anti-inflammatory substance was successful in individual pigs, although mycoplasma species are intrinsically resistant to β -lactam antibiotics [39]. In contrast, MIC values for tiamulin are low for *M. hyosynoviae* (≤ 0.25 $\mu\text{g}/\text{mL}$) [39], but treatment with this substance was not successful on the farm in the case report. With high probability, the anti-inflammatory parenteral treatment, which was not performed in combination with the in-feed-treatment with a pleuromutilin, was responsible for the improvement. If this was the case, infection with *M. hyosynoviae* might not be the primary cause of the clinical signs, but instead pain either caused by inflammation or by the degenerative joint alterations.

Due to the generally differing outcome of *M. hyosynoviae*-infection, identifying further influencing factors in affected swine is of high importance. On the farm in

question, claw lesions and osteochondropathy were identified as additional factors. During nursery, pigs were kept on plastic flooring, which is characterized by a different hardness compared to concrete flooring in the fattening stable. These differences between both materials in hardness but also surface roughness are risk factors for the development of claw lesions as a consequence of mismatching in horn quality and underground [40]. Piglets experience a sudden change in underground after moving to the fattening unit without an adaptation period. The observed claw lesions were indicative of abrasive injuries (sole erosions), but can also be the consequence of extended resting periods due to painfulness while moving (skin lesions at the coronary band region). In general, additional factors can support the development of claw lesions, e.g., genetically determined asymmetries in inner and outer claws and abnormal toe angles, but also nutrient deficiency, e.g., biotin [41, 42], which were not suspected in the present case. Claw lesions can be the consequence of degenerative joint diseases but also a risk factor for the development thereof such as OC [43]. Any kind of cartilage pre-damage might contribute to the adhesion of *M. hyosynoviae* [44]. A negative impact of P deficiency - suspected here at least in one animal - on the function of the connective tissue has been shown in other species [45]. Hypothetical low intake of P would include low P concentrations in the blood as acute P deficiency, which was only observed in one pig (Table 5). The determined bone markers hinted at a stimulated bone resorption maybe as a consequence of marginal P supply of individuals with higher daily weight gain [46, 47].

Nevertheless, the hypothesis of an additional nutritional impact on disease development could only be supported by bone composition in one pig in this case. The comparably low bone mineral content in combination with the bone marker result might suggest that bone formation with respect to mineral accretion was reduced. Bone ashing in pigs is a further diagnostic approach to verify the suspicion of impaired mineralization. Standardization of the method has been improved in recent years so that preliminary reference values could be elaborated for the femur [36]. Bone ash diagnostic was found to be appropriate for diagnostic evaluation of marginal supply with minerals lasting at least 3 weeks [36]. In growth periods with insufficient Ca and P supply, at first, the total bone mass is reduced, while bone formation and composition might be maintained. A lower ratio of the diameter of the long bones to body mass can be the consequence [36]. The pressure on the end of bones covered by cartilage depends on body mass and the area of contact within the joint. It could be that also in young pigs – as observed in growing dogs- the dietary P supply affects the strength of muscles that keep

the bones in the right position [45]. With an insufficient P intake and impaired muscle tonus, there is a predisposing effect for alterations of the cartilage especially in pigs with high growth rates.

Analysis of diet composition and feeding anamnesis are fundamental in the diagnostic procedure. The authors assume that a marginal mineral supply during a specific juvenile phase of life with high growth rates might be predisposing factors of disease development in later life. The three pigs examined in this study were slightly heavier (approximately 3 kg) than the average pigs in the respective age-group, so that high daily weight gain can be assumed. In individuals with high growth rates (~ 900 g average daily weight gain), the uptake of digestible P might have been insufficient at the end of nursery/beginning of fattening, especially when the phytase content in the final diet is reduced by a relatively high proportion of phytase-free fermented ingredients. To diagnose a marginal mineral supply in critical growth phases, not only the demand of the pigs with respect to feed intake and growth rate, but also for bone mineralization should be considered.

A ratio of digestible Ca to digestible P for adequate mineralization of bones and optimal growth performance was found to be approximately 1.23:1 in cases when digestible P met the requirements [48]. Excess Ca in combination with P concentrations below recommended requirements led to decreased growth rates [48]. Both requirements were fulfilled in this case report with low P concentrations and a relatively wide Ca:P ratio in the final diet. Estimates for Ca requirements of Ca in growing pigs range from 6.3–4.2 g/kg DM in pigs with 20–80 kg bw [19, 20]. Different batches of compound feed vary in P and Ca concentrations, which can lead to deficiencies in short periods depending on batch size. Labeled diet compositions are only based on an analysis in the first charge. In general, digestibility of dietary P is markedly improved by fermenting the liquid diet before offering it to the animals and by adding phytase to the compound feed [49–51]. Both strategies were applied on this farm.

In the three examined pigs in this study, histologic findings were only indicative of osteochondropathy and not mineral or vitamin D deficiency, which would be characterized by distinct morphologic entities as e.g. failure of newly formed osteoid to mineralize [52, 53]. As metabolic bone diseases are usually reversible, any typical histologic changes might had been present at an earlier point in time and would most likely have been superimposed by the degenerative processes at the time of examination. Some studies support the multifactorial pathogenesis of osteochondropathy but there is lack of evidence for an interaction with mineral deficiency [54, 55]. Under experimental conditions, hypophosphataemia was found

to cause focal cartilage lesions, which were different from cartilage degeneration typical of osteochondrosis [56].

At the beginning of being involved in this clinical case, the primary hypothesis was that the development of the disease was a multifactorial process starting with an impaired bone mineralization and triggering the development of osteochondropathy of the joints. Pigs with high growth rates develop high pressure on cartilage surfaces of the long bones. In the case that muscular forces are weakened due to a marginal P supply, deviations in limb axes with the consequence of improper biomechanical stress on joint cartilage surfaces, aseptic inflammation and subsequent pain during movement might occur. Whether cartilage alterations as shown in these pigs are predisposing factors for colonization and infection with *M. hyosynoviae* remains hypothetical. Some authors have considered that OC could be a predisposing factor for joints to be infected with *M. hyosynoviae* [44]. However, these assumptions were refuted by authors who did not find *M. hyosynoviae* any more frequently in individuals at the slaughterhouse with OC than in individuals without OC [3].

So far, the potential triad involved in disease development can be covered by the most straightforward diagnostic steps reported in veterinary practice; namely, i) comparison of recommended dietary P levels with those analyzed in the investigated case, during specific growth phases with expected high growth rates based on available farm-specific production and feed data, ii) bacteriological diagnostic of articular samples and iii) histologic examination of articular tissue. The new blood markers for diagnosis of mineral deficiency should be validated in the context of more practical cases, because they might be a promising new diagnostic tool for assessing skeletal health. Bone marker determination should be recommended especially in pigs with high daily weight gains showing stiff walking, tripping and reluctance to stand up, in order to assess the relation between bone catabolism and bone mineralization. In addition, we recommend in cases of sudden increased lameness to look at recent findings without neglecting the period before the episodes, including the previous dietary supply with P, especially of individuals with higher daily weight gains.

Finally, the question concerning the degree of impact of either P deficiency or osteochondropathy as well as claw lesions on the disease and especially on disease pathogenesis in *M. hyosynoviae* infection cannot be answered in this case. Thus, experimental studies under standardized conditions, also taking various genetic backgrounds into account, would be necessary.

Acknowledgments

We wish to thank the farmer for his support in providing anamnestic data and initiating all diagnostic steps.

Authors' contributions

IH, EG and JT contributed to the conception and design of the present case report. BW conducted the literature study and wrote the first draft of the manuscript. JT, JV and MB performed the clinical examination, and JV and MB performed the necropsy. JK, FH and HR gave helpful professional advice and helped with the processing regarding nutrition and pathology. All authors contributed to the development and the revisions of the manuscript and approved the final version.

Funding

Open Access funding enabled and organized by Projekt DEAL.

Availability of data and materials

Data sharing is not applicable to this article as no datasets were generated or analyzed during the current study.

Ethics approval and consent to participate

The present case report does not include experimental data, and all further investigations were performed as routine diagnostics during the clinical outbreak. Therefore, seeking approval from the animal ethics committee was unnecessary.

Consent for publication

Not applicable.

Competing interests

The authors declare that they have no competing interests.

Author details

¹Veterinary Practice Duemmerland, Steinfeld, Oldenburg, Germany. ²Vetland* Dr. Tenhündfeld & Kollegen, Vreden, Germany. ³Field Station for Epidemiology, University of Veterinary Medicine Hannover, Foundation, Hannover, Germany. ⁴Institute for Animal Nutrition, University of Veterinary Medicine Hannover, Foundation, Hannover, Germany. ⁵Department of Pathology, University of Veterinary Medicine Hannover, Foundation, Hannover, Germany.

Received: 15 June 2020 Accepted: 7 December 2020

Published online: 15 December 2020

References

- Kobisch M, Friis N. Swine mycoplasmoses. *Rev Sci Tech.* 1996;15(4):1569–614.
- Gomes Neto J, Gauger P, Strait E, Boyes N, Madson D, Schwartz K. Mycoplasma-associated arthritis: critical points for diagnosis. *J Swine Health Prod.* 2012;20(2):82–6.
- Nielsen E, Nielsen N, Friis N. Mycoplasma hyosynoviae arthritis in grower-finisher pigs. *J Vet Med A.* 2001;48(8):475–86.
- Clavijo MJ, Anderson A, Gei-ger J, Lyons W. Can we eliminate mycoplasma hyosynoviae and mycoplasma hyorhinis? National Hog Farmer online. <http://www.nationalhogfarmer.com/animal-health/can-we-eliminate-mycoplasma-hyosynoviae-and-mycoplasma-hyorhinis>. Accessed 15 Sept 2020.
- Ross R, Duncan J. Mycoplasma hyosynoviae arthritis of swine. *J Am Vet Med Assoc.* 1970;157(11):1515.
- Ross RF. Pathogenicity of swine mycoplasmas. *Ann N Y Acad Sci.* 1973; 225(1):347–68.
- grosse Beilage E, Wendt M. Diagnostik und Gesundheitsmanagement im Schweinebestand. 1st ed. Stuttgart: UTB; 2013.
- White M. Joint disease in the pig. In *Pract.* 1994;16(1):37–40.
- Olstad K, Ekman S, Carlson CS. An update on the pathogenesis of osteochondrosis. *Vet Pathol.* 2015;52(5):785–802.
- Olstad K, Shea KG, Cannamela PC, Polousky JD, Ekman S, Ytrehus B, Carlson CS. Juvenile osteochondritis dissecans of the knee is a result of failure of the blood supply to growth cartilage and osteochondrosis. *Osteoarthr Cartil.* 2018;26:1691–8.
- Olstad K, Wormstrand B, Kongsro J, Grindflek E. Osteochondrosis in the distal femoral physis of pigs starts with vascular failure. *Vet Pathol.* 2019; 56(5):732–42.
- Ytrehus B, Carlson CS, Ekman S. Etiology and pathogenesis of osteochondrosis. *Vet Pathol.* 2007;44(4):429–48.

13. Grøndalen T. Leg weakness in pigs. II. Litter differences in leg weakness, skeletal lesions, joint shape and exterior conformation. *Acta Vet Scand.* 1974;15:574–86.
14. van der Wal PG, van der Valk PC, Goedegebuure SA, van Essen G. Osteochondrosis in six breeds of slaughter pigs. II. Data concerning carcass characteristics in relation to osteochondrosis. *Vet Q.* 1980;2:42–7.
15. Dodds WK, Smith VH. Nitrogen, phosphorus, and eutrophication in streams. *Inland Waters.* 2016;6(2):155–64.
16. Ferket P, Van Heugten E, Van Kempen T, Angel R. Nutritional strategies to reduce environmental emissions from nonruminants. *J Anim Sci.* 2002;80(E. Suppl. 2):E168–82.
17. Directive 2001/81/EC of the European Parliament and of the Council of 23 October 2001 on national emission ceilings for certain atmospheric pollutants.
18. Andretta I, Pomar C, Rivest J, Pomar J, Radünz J. Precision feeding can significantly reduce lysine intake and nitrogen excretion without compromising the performance of growing pigs. *Animal.* 2016;10(7):1137–47.
19. Suttle NF. Mineral nutrition of livestock. 4th ed. UK: CABI Oxfordshire; 2010.
20. NRC – National Research Council. Nutrient requirements of swine. 11th rev ed. Washington, D.C: Natl. Acad. Press; 2012. Stein HH, Merriman.
21. Gutierrez NA, Serão NVL, Elsbernd AJ, Hansen SL, Walk CL, Bedford MR, Patience JF. Quantitative relationships between standardized total tract digestible phosphorus and total calcium intakes and their retention and excretion in growing pigs fed corn–soybean meal diets. *J Anim Sci.* 2015;93: 2174–82.
22. Adeola O, Azain MJ, Carter SD, Crenshaw TD, Estienne MJ, Kerr BJ, Lindemann MD, Maxwell CV, Miller PS, Shannon MC, van Heugten E. A cooperative study on the standardized total-tract digestible phosphorus requirement of twenty-kilogram pigs. *J Anim Sci.* 2015;93(12):5743–53.
23. Crenshaw TD. Calcium, phosphorus, vitamin D, and vitamin K in swine nutrition. In: Lewis AJ, Southern LL, editors. *Swine nutrition.* Boca Raton: CRC Press; 2001. p. 187–212.
24. Varley P, Sweeney T, Ryan M, O'doherty J. The effect of phosphorus restriction during the weaner-grower phase on compensatory growth, serum osteocalcin and bone mineralization in gilts. *Livest Sci.* 2011;135(2–3):282–8.
25. Heaney R, Abrams S, Dawson-Hughes B, Looker A, Looker A, Marcus R, Matkovic V, Weaver C. Peak bone mass. *Osteoporos Int.* 2000;11(12):985–1009.
26. Simons P, Versteegh HA, Jongbloed AW, Kemme P, Slump P, Bos K, Wolters M, Beudeker R, Verschoor G. Improvement of phosphorus availability by microbial phytase in broilers and pigs. *Br J Nutr.* 1990;64(2):525–40.
27. Zofkova I. Bone tissue as a systematic endocrine regulator. *Physiol Res.* 2001; 64:439–55.
28. González-Vega JC, Stein HH. Calcium digestibility and metabolism in pigs. *Asian-Australas J Anim Sci.* 2014;27(1):1–9.
29. Doyle ME, Jan de Beur SM. The skeleton. Endocrine regulator of phosphate homeostasis. *Curr Osteoporos Rep.* 2008;6(4):134–41.
30. McCue M, Reichert JL, Crenshaw TD. Impact of dietary vitamin D3 supplements in nursery diets on subsequent growth and bone responses of pigs during an immune challenge. *J Anim Sci.* 2019;97(12):4895–903.
31. Williams NH, Stahly TS, Zimmerman DR. Effect of chronic immune system activation on the rate, efficiency, and composition of growth and lysine needs of pigs fed from 6 to 27 kg. *J Anim Sci.* 1997;75(9):2463–71.
32. Crenshaw TD, Peo ER, Lewis AJ Jr, Moser BD, Olson D. Influence of age, sex and calcium and phosphorus levels on the mechanical properties of various bones in swine. *J Anim Sci.* 1981;52(6):1319–29.
33. Naumann C, Bassler R. Methoden der landwirtschaftlichen Forschungs- und Untersuchungsanstalt, Biochemische Untersuchung von Futtermitteln, Methodenbuch 3 (einschließlich der achten Ergänzungen) VDLUFA, Darmstadt, Germany. 2012.
34. El-Wahab AA, Visscher C, Teitge F, Steinhagen D. Choice preference of diets with different protein levels depending on water temperature in Nile tilapia. *J World Aquacult Soc.* 2020;51:512–26.
35. Klem TB, Bleken E, Morberg H, Thoresen SI, Framstad T. Hematologic and biochemical reference intervals for Norwegian crossbreed grower pigs. *Vet Clin Pathol.* 2010;39:221–6.
36. Rieger H. Untersuchungen zum Einfluss einer unterschiedlichen Phosphorversorgung auf die Entwicklung und Mineralisation verschiedener Knochen wachsender Schweine. Thesis. University of Veterinary Medicine Hannover. 2017.
37. Teixeira AO, Corassa A, Moreira LM, Nogueira ET, Lopes JB, Rocha CM, Ferreira VPA. Bone characteristics of pigs fed different sources of phosphorus. *Rev Col Cienc Pec.* 2016;29:245–54.
38. O'Doherty JV, Gahan DA, O'Shea C, Callan JJ, Pierce KM. Effects of phytase and 25-hydroxyvitamin D3 inclusions on the performance, mineral balance and bone parameters of grower-finisher pigs fed low-phosphorus diets. *Animal.* 2010;4(10):1634–40.
39. Gautier-Bouchardon AV. Antimicrobial resistance in mycoplasma spp. Antimicrobial resistance in bacteria from livestock and companion animals. *Review Microbiol Spectr.* 2018;6(4):425–46.
40. Jørgensen B. Influence of floor type and stocking density on leg weakness, osteochondrosis and claw disorders in slaughter pigs. *Anim Sci.* 2003;77: 439–49.
41. Olsson A, Svendsen J, Botermans J, Bergsten C. An experimental model for studying claw lesions in growing female pigs. *Livest Sci.* 2016;184:58–63.
42. Webb NG, Penny RH, Johnston AM. Effect of a dietary supplement of biotin on pig hoof horn strength and hardness. *Vet Rec.* 1984;114(8):185–9.
43. Jensen TB, Kristensen AR, Toft N, Baadsgaard NP, Østergaard S, Houe H. An object-oriented Bayesian network modeling the causes of leg disorders in finisher herds. *Prev Vet Med.* 2009;89(3):237–48.
44. Lawrisuk L, Rothschild M, Ross R, Christian L. Relationship between mycoplasma hyosynoviae infection and front limb weakness in Duroc swine. *Am J Vet Res.* 1987;48(9):1395–7.
45. Kiefer-Hecker B, Kienzle E, Dobenecker B. Effects of low phosphorus supply on the availability of calcium and phosphorus, and musculoskeletal development of growing dogs of two different breeds. *J Anim Physiol Anim Nutr.* 2018;102(3):789–98.
46. Carter S, Cromwell G, Combs T, Colombo G, Fanti P. The determination of serum concentrations of osteocalcin in growing pigs and its relationship to end-measures of bone mineralization. *J Anim Sci.* 1996;74(11):2719–29.
47. Peel N, Eastell R. Measurement of bone mass and turnover. *Baillieres Clin Rheumatol.* 1993;7(3):479–98.
48. Lagos LV, Walk CL, Murphy MR, Stein HH. Effects of dietary digestible calcium on growth performance and bone ash concentration in 50 to 85 kg growing pigs fed diets with different concentrations of digestible phosphorus. *Anim Feed Sci Technol.* 2019;247:262–72.
49. Pagano AR, Yasuda K, Roneker KR, Crenshaw TD, Lei XG. Supplemental Escherichia coli phytase and strontium enhance bone strength of young pigs fed a phosphorus-adequate diet. *J Nutr.* 2007;137(7):1795–801.
50. Veum T, Bollinger D, Buff C, Bedford M. A genetically engineered Escherichia coli phytase improves nutrient utilization, growth performance, and bone strength of young swine fed diets deficient in available phosphorus. *J Anim Sci.* 2006;84(5):1147–58.
51. Bunte S. Die Fermentation von Flüssigfutter als Fütterungskonzept im Schweinebestand: Potentiale, aber auch Risiken aus Sicht der Tierernährung und Tiermedizin. Thesis. University of Veterinary Medicine Hannover. 2018.
52. Scholz-Ahrens KE, Glüer CC, Bronner F, Dellling G, Açil Y, Hahne HJ, Hassenpflug J, Timm W, Schrezenmeir J. Modulation of vitamin D status and dietary calcium affects bone mineral density and mineral metabolism in göttingen minipigs. *ISRN Rheumatol.* 2013;2013:460512.
53. Madsen DM, Ensley SM, Gauger PC, Schwartz KJ, Stevenson GW, Cooper VL, Janke BH, Burrough ER, Goff JP, Horst RL. Rickets: case series and diagnostic review of hypovitaminosis D in swine. *J Vet Diagn Investig.* 2012;24(6):1137–44.
54. Fabà L, Gasa J, Tokach M, Varella E, Solà-Oriol D. Effects of supplementing organic microminerals and methionine with or without limiting growth during the rearing phase of replacement gilts on lameness, growth, and body composition. *Transl Anim Sci.* 2019;3:717–30.
55. Hartnett P, Boyle L, Younge B, O'Driscoll K. The effect of group composition and mineral supplementation during rearing on measures of cartilage condition and bone mineral density in replacement gilts. *Animals.* 2019;9(9): 637.
56. Reiland S, Håglin L, Sjöberg H-E. Experimental hypophosphataemia in growing pigs: effects on endochondral ossification in comparison to osteochondrosis. *J Comp Pathol.* 1991;105(3):247–54.

Publisher's Note

Springer Nature remains neutral with regard to jurisdictional claims in published maps and institutional affiliations.